

Simulation of multistate models with multiple timescales: simLexis in the Epi package

SDC

Thursday 25th May, 2017

<http://BendixCarstensen.com/Epi/simLexis.pdf>

Version 2.3

Compiled Thursday 25th May, 2017, 08:03

Bendix Carstensen Steno Diabetes Center, Gentofte, Denmark
& Department of Biostatistics, University of Copenhagen
bxo@steno.dk
<http://BendixCarstensen.com>

Contents

1	Using <code>simLexis</code>	1
1.1	Introduction	1
1.2	<code>simLexis</code> in practice	1
1.2.1	Input for the simulation	2
1.3	Setting up a <code>Lexis</code> object	3
1.4	Analysis of rates	5
1.5	The mortality rates	6
1.5.1	Proportionality of mortality rates	6
1.5.2	How the mortality rates look	8
1.6	Input to the <code>simLexis</code> function	10
1.6.1	The transition object	10
1.6.2	The initial cohort	11
1.7	Simulation of the follow-up	12
1.7.1	Using other models for simulation	13
1.8	Reporting the simulation results	14
1.8.1	Comparing predictions from different models	18
2	Simulation of transitions in multistate models	20
2.1	Theory	20
2.2	Components of <code>simLexis</code>	21
2.2.1	<code>simX</code>	23
2.2.2	<code>sim1</code>	25
2.2.3	<code>lint</code>	25
2.2.4	<code>get.next</code>	26
2.2.5	<code>chop.lex</code>	26
2.3	Probabilities from simulated <code>Lexis</code> objects	26
2.3.1	<code>nState</code>	27
2.3.2	<code>pState</code> , <code>plot.pState</code> and <code>lines.pState</code>	27
	References	29

Chapter 1

Using `simLexis`

1.1 Introduction

This vignette explains the machinery behind simulation of life histories through multistate models implemented in `simLexis`. In `simLexis` transition rates are allowed to depend on multiple time scales, including timescales defined as time since entry to a particular state (duration). This therefore also covers the case where time *at* entry into a state is an explanatory variable for the rates, since time at entry is merely time minus duration. Thus, the set-up here goes beyond Markov- and semi-Markov-models, and brings simulation based estimation of state-occupancy probabilities into the realm of realistic multistate models.

The basic idea is to simulate a new `Lexis` object [3, 1] as defined in the `Epi` package for R, based on 1) a multistate model defined by its states and the transition rates between them and 2) an initial population of individuals.

Thus the output will be a `Lexis` object describing the transitions of a predefined set of persons through a multistate model. Therefore, if persons are defined to be identical at start, then calculation of the probability of being in a particular state at a given time boils down to a simple enumeration of the fraction of the persons in the particular state at the given time. Bar of course the (binomial) simulation error, but this can be brought down by simulation a sufficiently large number of persons.

An observed `Lexis` object with follow-up of persons through a number of states will normally be the basis for estimation of transition rates between states, and thus will contain all information about covariates determining the occurrence rates, in particular the *timescales* [2]. Hence, the natural input to simulation from an estimated multistate model will typically be an object of the same structure as the originally observed. Since transitions and times are what is simulated, any values of `lex.Xst` and `lex.dur` in the input object will of course be ignored.

This first chapter of this vignette shows by an example how to use the function `simLexis` and display the results. The subsequent chapter discusses in more detail how the simulation machinery is implemented and is not needed for the practical use of `simLexis`.

1.2 `simLexis` in practice

This section is largely a commented walk-through of the example from the help-page of `simLexis`, with a larger number of simulated persons in order to minimize the pure

simulation variation.

When we want to simulate transition times through a multistate model where transition rates may depend on time since entry to the current or a previous state, it is essential that we have a machinery to keep track of the transition time on *all* time scales, as well as a mechanism that can initiate a new time scale to 0 when a transition occurs to a state where we shall use time since entry as determinant of exit rates from that state. This is provided by *simLexis*.

1.2.1 Input for the simulation

Input for simulation of a single trajectory through a multistate model requires a representation of the *current status* of a person; the starting conditions. The object that we supply to the simulation function must contain information about all covariates and all timescales upon which transitions depend, and in particular which one(s) of the timescales that are defined as time since entry into a particular state. Hence, starting conditions should be represented as a *Lexis* object (where *lex.dur* and *lex.Xst* are ignored, since there is no follow-up yet), where the time scale information is in the attributes *time.scale* and *time.since* respectively.

Thus there are two main arguments to a function to simulate from a multistate model:

1. A *Lexis* object representing the initial states and covariates of the population to be simulated. This has to have the same structure as the original *Lexis* object representing the multistate model from which transition rates in the model were estimated. As noted above, the values for *lex.Xst* and *lex.dur* are not required (since these are the quantities that will be simulated).
2. A transition object, representing the transition intensities between states, which should be a list of lists of intensity representations. As an intensity representation we mean a function that for given a *Lexis* object that can be used to produce estimates of the transition intensities at a set of supplied time points since the state represented in the *Lexis* object.

The names of the elements of the transition object (which are lists) will be names of the *transient* states, that is the states *from* which a transition can occur. The names of the elements of each of these lists are the names of states *to* which transitions can occur (which may be either transient or absorbing states).

Hence, if the transition object is called *Tr* then *Tr\$A\$B* (or *Tr[["A"]][["B"]]*) will represent the transition intensity from state *A* to the state *B*.

The entries in the transition object can be either *glm* objects, representing Poisson models for the transitions, *coxph* objects representing an intensity model along one time scale, or simply a function that takes a *Lexis* object as input returns an estimated intensity for each row.

In addition to these two input items, there will be a couple of tuning parameters.

The output of the function will simply be a *Lexis* object with simulated transitions between states. This will be the basis for deriving sensible statistics from the *Lexis* object — see next section.

1.3 Setting up a *Lexis* object

As an example we will use the *DMlate* dataset from the *Epi* package; it is a dataset simulated to resemble a random sample of 10,000 patients from the Danish National Diabetes Register.

We start by loading the *Epi* package:

```
> options( width=90 )
> library( Epi )
> print( sessionInfo(), l=F )
R version 3.4.0 (2017-04-21)
Platform: x86_64-pc-linux-gnu (64-bit)
Running under: Ubuntu 14.04.5 LTS

Matrix products: default
BLAS: /usr/lib/libblas/libblas.so.3.0
LAPACK: /usr/lib/lapack/liblapack.so.3.0

attached base packages:
[1] stats      graphics  grDevices  utils      datasets  methods    base

other attached packages:
[1] Epi_2.15

loaded via a namespace (and not attached):
[1] cmprsk_2.2-7      MASS_7.3-45      compiler_3.4.0   Matrix_1.2-6
[5] plyr_1.8.4        parallel_3.4.0   tools_3.4.0      survival_2.41-3
[9] etm_0.6-2         Rcpp_0.12.5      splines_3.4.0    grid_3.4.0
[13] data.table_1.9.6  numDeriv_2014.2-1 chron_2.3-47     lattice_0.20-33
```

First we load the diabetes data and set up a simple illness-death model:

```
> data(DMlate)
> dml <- Lexis( entry = list(Per=dodm, Age=dodm-dobth, DMdur=0 ),
+               exit  = list(Per=dox),
+               exit.status = factor(!is.na(dodth), labels=c("DM", "Dead")),
+               data = DMlate )
NOTE: entry.status has been set to "DM" for all.
```

This is just data for a simple survival model with states “DM” and “Dead”. Now we cut the follow-up at insulin start, which for the majority of patients (T2D) is a clinical indicator of deterioration of disease regulation. We therefore also introduce a new timescale, and split the non-precursor states, so that we can address the question of ever having been on insulin:

```
> dmi <- cutLexis( dml, cut = dml$doins,
+                  pre = "DM",
+                  new.state = "Ins",
+                  new.scale = "t.Ins",
+                  split.states = TRUE )
> summary( dmi )
```

Transitions:

	From	To	DM	Ins	Dead	Dead(Ins)	Records:	Events:	Risk time:	Persons:
	DM	DM	6157	1694	2048	0	9899	3742	45885.49	9899
	Ins	Ins	0	1340	0	451	1791	451	8387.77	1791
	Sum		6157	3034	2048	451	11690	4193	54273.27	9996

```
> str(dmi)
```

```

Classes 'Lexis' and 'data.frame':      11690 obs. of  15 variables:
 $ Per   : num  1999 2003 2005 2009 2009 ...
 $ Age   : num  58.7 64.1 86.3 44 75.8 ...
 $ DMdur  : num  0 0 0 0 0 0 0 0 0 0 ...
 $ t.Ins  : num  NA NA NA NA NA NA NA NA NA ...
 $ lex.dur: num  11.08 6.689 5.446 0.736 1.344 ...
 $ lex.Cst: Factor w/ 4 levels "DM","Ins","Dead",...: 1 1 1 1 1 1 1 1 1 ...
 $ lex.Xst: Factor w/ 4 levels "DM","Ins","Dead",...: 1 1 1 1 1 3 1 1 3 1 ...
 $ lex.id : int  1 2 3 4 5 6 7 8 9 10 ...
 $ sex    : Factor w/ 2 levels "M","F": 2 1 2 2 1 2 1 1 2 1 ...
 $ dobth  : num  1940 1939 1918 1965 1933 ...
 $ dodm   : num  1999 2003 2005 2009 2009 ...
 $ dodth  : num  NA NA NA NA NA ...
 $ dooad  : num  NA 2007 NA NA NA ...
 $ doins  : num  NA NA NA NA NA NA NA NA NA ...
 $ dox    : num  2010 2010 2010 2010 2010 ...
 - attr(*, "time.scales")= chr  "Per" "Age" "DMdur" "t.Ins"
 - attr(*, "time.since")= chr  "" "" "" "" "Ins"
 - attr(*, "breaks")=List of 4
 ..$ Per   : NULL
 ..$ Age   : NULL
 ..$ DMdur : NULL
 ..$ t.Ins : NULL

```

We can show how many person-years we have and show the number of transitions and transition rates (per 1000), using the `boxes.Lexis` function to display the states and the number of transitions between them:

```

> boxes( dmi, boxpos = list(x=c(20,20,80,80),
+                             y=c(80,20,80,20)),
+        scale.R = 1000, show.BE = TRUE )

```

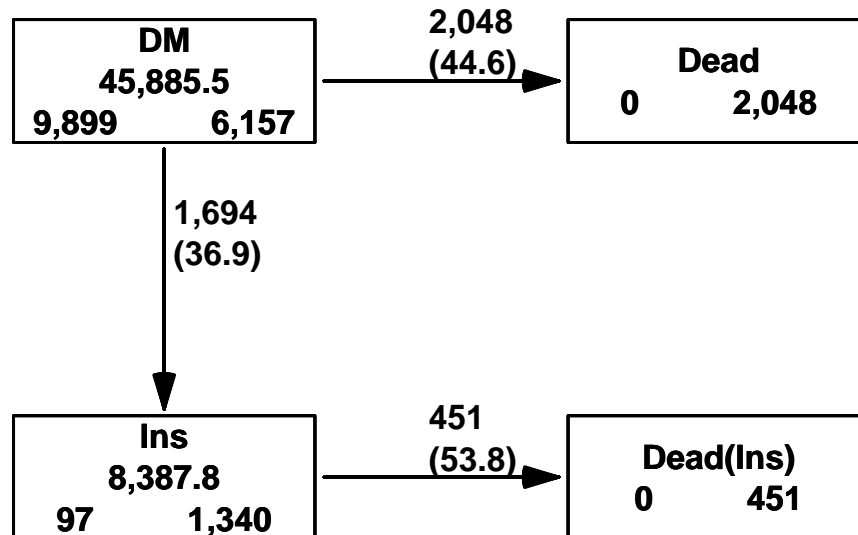


Figure 1.1: Data overview for the `dmi` dataset. Numbers in the boxes are person-years and the number of persons who begin, resp. end their follow-up in each state, and numbers on the arrows are no. of transitions and rates (transition intensities) per 1000 PY.

1.4 Analysis of rates

In the `Lexis` object (which is just a data frame) each person is represented by one record for each transient state he occupies, thus in this case either 1 or 2 records; those who have a recorded time both without and with insulin have two records.

In order to be able to fit Poisson models with occurrence rates varying by the different time-scales, we split the follow-up in 6-month intervals for modeling:

```
> Si <- splitLexis( dmi, 0:30/2, "DMdur" )
> dim( Si )
[1] 115370      15
> print( subset( Si, lex.id==97 )[,1:10], digits=6 )
```

	lex.id	Per	Age	DMdur	t.Ins	lex.dur	lex.Cst	lex.Xst	sex	dobth
1105	97	1997.55	58.9268	0.00000	NA	0.5000000	DM	DM	F	1938.62
1106	97	1998.05	59.4268	0.50000	NA	0.5000000	DM	DM	F	1938.62
1107	97	1998.55	59.9268	1.00000	NA	0.5000000	DM	DM	F	1938.62
1108	97	1999.05	60.4268	1.50000	NA	0.5000000	DM	DM	F	1938.62
1109	97	1999.55	60.9268	2.00000	NA	0.1793292	DM	Ins	F	1938.62
1110	97	1999.72	61.1061	2.17933	0.000000	0.3206708	Ins	Ins	F	1938.62
1111	97	2000.05	61.4268	2.50000	0.320671	0.5000000	Ins	Ins	F	1938.62
1112	97	2000.55	61.9268	3.00000	0.820671	0.0116359	Ins	Dead(Ins)	F	1938.62

Note that when we split the follow-up each person's follow up now consists of many records, each with the *current* values of the timescales at the start of the interval represented by the record. In the modelling we must necessarily assume that the rates are constant within each 6-month interval, but the *size* of these rates we model as smooth functions of the time scales (that is the values at the beginning of each interval).

The approach often used in epidemiology where one parameter is attached to each interval of time (or age) is not feasible when more than one time scale is used, because intervals are not classified the same way on all timescales.

We shall use natural splines (restricted cubic splines) for the analysis of rates, and hence we must allocate knots for the splines. This is done for each of the time-scales, and separately for the transition out of states "DM" and "Ins". For age, we place the knots so that the number of events is the same between each pair of knots, but only half of this beyond each of the boundary knots, whereas for the timescales `DMdur` and `tIns` where we have observation from a well-defined 0, we put knots at 0 and place the remaining knots so that the number of events is the same between each pair of knots as well as outside the boundary knots.

```
> nk <- 5
> ( ai.kn <- with( subset(Si,lex.Xst=="Ins" & lex.Cst!=lex.Xst ),
+               quantile( Age+lex.dur , probs=(1:nk-0.5)/nk ) ) )
      10%      30%      50%      70%      90%
23.23751 48.82218 58.63244 67.79028 78.88542
> ( ad.kn <- with( subset(Si,lex.Xst=="Dead"),
+               quantile( Age+lex.dur , probs=(1:nk-0.5)/nk ) ) )
      10%      30%      50%      70%      90%
61.91951 72.52731 78.43121 83.32348 90.15195
> ( di.kn <- with( subset(Si,lex.Xst=="Ins" & lex.Cst!=lex.Xst ),
+               c(0,quantile( DMdur+lex.dur , probs=(1:(nk-1))/nk ) ) ) )
      20%      40%      60%      80%
0.00000000 0.06570842 0.45448323 3.28761123 6.63764545
> ( dd.kn <- with( subset(Si,lex.Xst=="Dead"),
+               c(0,quantile( DMdur+lex.dur , probs=(1:(nk-1))/nk ) ) ) )
```

```

                20%      40%      60%      80%
0.0000000 0.7687885 2.1327858 4.0465435 6.5232033
> ( ti.kn <- with( subset(Si,lex.Xst=="Dead(Ins)"),
+               c(0,quantile( t.Ins+lex.dur, probs=(1:(nk-1))/nk ) ) )
                20%      40%      60%      80%
0.0000000 0.3093771 1.1307324 2.5489391 4.9117043

```

Note that when we tease out the event records for transition to *transient* states (in this case “Ins”, that is `verb|lex.Xst=="Ins"`), we should add `lex.Cst!=lex.Xst`, to include only transition records and avoiding including records of sojourn time in the transient state.

We then fit Poisson models to transition rates, using the wrapper `Ns` from the `Epi` package to simplify the specification of the rates:

```

> library( splines )
> DM.Ins <- glm( (lex.Xst=="Ins") ~ Ns( Age , knots=ai.kn ) +
+               Ns( DMdur, knots=di.kn ) +
+               I(Per-2000) + sex,
+               family=poisson, offset=log(lex.dur),
+               data = subset(Si,lex.Cst=="DM") )
> DM.Dead <- glm( (lex.Xst=="Dead") ~ Ns( Age , knots=ad.kn ) +
+               Ns( DMdur, knots=dd.kn ) +
+               I(Per-2000) + sex,
+               family=poisson, offset=log(lex.dur),
+               data = subset(Si,lex.Cst=="DM") )
> Ins.Dead <- glm( (lex.Xst=="Dead(Ins)") ~ Ns( Age , knots=ad.kn ) +
+               Ns( DMdur, knots=dd.kn ) +
+               Ns( t.Ins, knots=ti.kn ) +
+               I(Per-2000) + sex,
+               family=poisson, offset=log(lex.dur),
+               data = subset(Si,lex.Cst=="Ins") )

```

Note the similarity of the code used to fit the three models, is is mainly redefining the response variable (“to” state) and the subset of the data used (“from” state).

1.5 The mortality rates

This section discusses in some detail how to extract and display the mortality rates from the models fitted. But it is not necessary for understanding how to use *simLexis* in practice.

1.5.1 Proportionality of mortality rates

Note that we have fitted separate models for the three transitions, there is no assumption of proportionality between the mortality rates from `DM` and `Ins`.

However, there is nothing that prevents us from testing this assumption; we can just fit a model for the mortality rates in the entire data frame `Si`, and compare the deviance from this with the sum of the deviances from the separate models:

```

> with( Si, table(lex.Cst) )
lex.Cst
      DM      Ins      Dead Dead(Ins)
    97039    18331         0         0
> All.Dead <- glm( (lex.Xst %in% c("Dead(Ins)","Dead")) ~
+               Ns( Age , knots=ad.kn ) +
+               Ns( DMdur, knots=dd.kn ) +
+               lex.Cst +
+               I(Per-2000) + sex,

```



```
+          family=poisson, offset=log(lex.dur),
+          data = Si )
> round( ci.exp( All.Dead ), 3 )
```

	exp(Est.)	2.5%	97.5%
(Intercept)	0.049	0.043	0.056
Ns(Age, knots = ad.kn)1	4.120	3.479	4.879
Ns(Age, knots = ad.kn)2	4.652	4.054	5.338
Ns(Age, knots = ad.kn)3	15.460	13.575	17.608
Ns(Age, knots = ad.kn)4	7.529	6.711	8.447
Ns(DMdur, knots = dd.kn)1	0.520	0.429	0.629
Ns(DMdur, knots = dd.kn)2	0.707	0.622	0.803
Ns(DMdur, knots = dd.kn)3	0.319	0.238	0.428
Ns(DMdur, knots = dd.kn)4	0.829	0.742	0.926
lex.CstIns	2.168	1.946	2.414
I(Per - 2000)	0.965	0.954	0.977
sexF	0.665	0.614	0.720

From the parameter values we would in a simple setting just claim that start of insulin-treatment was associated with a slightly more than doubling of mortality.

The model `All.dead` assumes that the age- and DM-duration effects on mortality in the “DM” and “Ins” states are the same, and moreover that there is no effect of insulin duration, but merely a mortality that is larger by a multiplicative constant not depending on insulin duration. The model `DM.Dead` has 8 parameters to describe the dependency on age and DM duration, the model `Ins.Dead` has 12 for the same plus the insulin duration (a natural spline with k knots gives $k - 1$ parameters, and we chose $k = 5$ above).

We can compare the fit of the proportional hazards model with the fit of the separate models for the two mortality rates, by adding up the deviances and d.f. from these:

```
> what <- c("null.deviance", "df.null", "deviance", "df.residual")
> ( rD <- unlist( DM.Dead[what] ) )

null.deviance    df.null    deviance    df.residual
    19957.95      97038.00    17849.90     97028.00

> ( rI <- unlist( Ins.Dead[what] ) )

null.deviance    df.null    deviance    df.residual
    4329.880     18330.000    3674.067     18316.000

> ( rA <- unlist( All.Dead[what] ) )

null.deviance    df.null    deviance    df.residual
    24300.15     115369.00    21608.79    115358.00

> round( c( dd <- rA-(rI+rD), "pVal"=1-pchisq(dd[3],dd[4]+1) ), 3 )

null.deviance    df.null    deviance    df.residual pVal.deviance
    12.314         1.000     84.822     14.000         0.000
```

Thus we see there is a substantial non-proportionality of mortality rates from the two states; but a test provides no clue whatsoever to the particular *shape* of the non-proportionality.

To this end, we shall explore the predicted mortalities under the two models quantitatively in more detail. Note that the reason that there is a difference in the null deviances (and a difference of 1 in the null d.f.) is that the null deviance of `All.Dead` refer to a model with a single intercept, that is a model with constant and *identical* mortality rates from the states “DM” and “Ins”, whereas the null models for `DM.Dead` and `Ins.Dead` have constant but *different* mortality rates from the states “DM” and “Ins”. This is however irrelevant for the comparison of the *residual* deviances.

1.5.2 How the mortality rates look

If we want to see how the mortality rates are modelled in `DM.Dead` and `Ins.Dead` in relation to `All.Dead`, we make a prediction of rates for say men diagnosed in different ages and going on insulin at different times after this. So we consider men diagnosed in ages 40, 50, 60 and 70, and who either never enter insulin treatment or do it 0, 2 or 5 years after diagnosis of DM.

To this end we create a prediction data frame where we have observation times from diagnosis and 12 years on (longer would not make sense as this is the extent of the data).

But we start by setting up an array to hold the predicted mortality rates, classified by diabetes duration, age at diabetes onset, time of insulin onset, and of course type of model. What we want to do is to plot the age-specific mortality rates for persons not on insulin, and for persons starting insulin at different times after DM. The mortality curves start at the age where the person gets diabetes and continues 12 years; for persons on insulin they start at the age when they initiate insulin.

```
> pr.rates <- NArray( list( DMdur = seq(0,12,0.1),
+                           DMage = 4:7*10,
+                           r.Ins = c(NA,0,2,5),
+                           model = c("DM/Ins", "All"),
+                           what = c("rate", "lo", "hi") ) )
> str( pr.rates )
logi [1:121, 1:4, 1:4, 1:2, 1:3] NA NA NA NA NA NA ...
- attr(*, "dimnames")=List of 5
 ..$ DMdur: chr [1:121] "0" "0.1" "0.2" "0.3" ...
 ..$ DMage: chr [1:4] "40" "50" "60" "70"
 ..$ r.Ins: chr [1:4] NA "0" "2" "5"
 ..$ model: chr [1:2] "DM/Ins" "All"
 ..$ what : chr [1:3] "rate" "lo" "hi"
```

For convenience the `Epi` package contains a function that computes predicted (log-)rates with c.i. — it is merely a wrapper for `predict.glm`:

```
> ci.pred
function (obj, newdata, Exp = NULL, alpha = 0.05)
{
  if (!inherits(obj, "glm"))
    stop("Not usable for non-glm objects")
  zz <- predict(obj, newdata = newdata, se.fit = TRUE, type = "link")
  zz <- cbind(zz$fit, zz$se.fit) %*% ci.mat(alpha = alpha)
  if (missing(Exp)) {
    return(obj$family$linkinv(zz))
  }
  else {
    if (Exp) {
      return(exp(zz))
    }
    else if (!Exp)
      return(zz)
  }
}
<environment: namespace:Epi>
```

So set up the prediction data frame and modify it in loops over ages at onset and insulin onset. Note that we set `lex.dur` to 1000 in the prediction frame, so that we obtain rates in units of events per 1000 PY.

```

> nd <- data.frame( DMdur = as.numeric( dimnames(pr.rates)[[1]] ),
+                   lex.Cst = factor( 1, levels=1:4,
+                                     labels=levels(Si$lex.Cst) ),
+                   sex = factor( 1, levels=1:2, labels=c("M","F")),
+                   lex.dur = 1000 )
> for( ia in dimnames(pr.rates)[[2]] )
+ {
+   dnew <- transform( nd, Age = as.numeric(ia)+DMdur,
+                     Per = 1998+DMdur )
+   pr.rates[,ia,1,"DM/Ins",] <- ci.pred( DM.Dead, newdata = dnew )
+   pr.rates[,ia,1,"All"    ,] <- ci.pred( All.Dead, newdata = dnew )
+   for( ii in dimnames(pr.rates)[[3]][-1] )
+   {
+     dnew = transform( dnew, lex.Cst = factor( 2, levels=1:4,
+                                               labels=levels(Si$lex.Cst) ),
+                       t.Ins = ifelse( (DMdur-as.numeric(ii)) >= 0,
+                                       DMdur-as.numeric(ii), NA ) )
+     pr.rates[,ia, ii , "DM/Ins",] <- ci.pred( Ins.Dead, newdata = dnew )
+     pr.rates[,ia, ii , "All"    ,] <- ci.pred( All.Dead, newdata = dnew )
+   }
+ }

```

So for each age at DM onset we make a plot of the mortality as function of current age both for those with no insulin treatment at those that start 1, 3 and 5 years after, thus 4 curves (with c.i.). These curves are replicated with a different color for the simplified model.

```

> par( mar=c(3,3,1,1), mgp=c(3,1,0)/1.6, las=1 )
> plot( NA, xlim=c(40,82), ylim=c(5,300), bty="n",
+       log="y", xlab="Age", ylab="Mortality rate per 1000 PY" )
> abline( v=seq(40,80,5), h=outer(1:9,10^(0:2),"*"), col=gray(0.8) )
> for( aa in 4:7*10 ) for( ii in 1:4 )
+   matlines( aa+as.numeric(dimnames(pr.rates)[[1]]),
+             cbind( pr.rates[,paste(aa),ii,"DM/Ins",],
+                   pr.rates[,paste(aa),ii,"All"    ,] ),
+             type="l", lty=1, lwd=c(3,1,1),
+             col=rep(c("red","limegreen"),each=3) )

```

From figure 1.2 we see that there is a substantial insulin-duration effect which is not accommodated by the simple model with only one time-dependent variable to describe the insulin effect. Note that the simple model (green curves) for those on insulin does not depend in insulin duration, and hence the mortality curves for those on insulin are just parallel to the mortality curves for those not on insulin, regardless of diabetes duration (or age) at the time of insulin initiation. This is the proportional hazards assumption. Thus the effect of insulin initiation is under-estimated for short duration of insulin and over-estimated for long duration of insulin.

This is the major discrepancy between the two models, and illustrates the importance of being able to accommodate different time scales, but there is also a declining overall insulin effect by age which is not accommodated by the proportional hazards approach.

Finally, this plot illustrates an important feature in reporting models with multiple timescales; all timescales must be represented in the predicted rates, only reporting the effect of one timescale, conditional on a fixed value of other timescales is misleading since all timescales by definition advance at the same pace. For example, the age-effect for a fixed value of insulin duration really is a misnomer since it does not correspond to any real person's follow-up, but to the mortality of persons in different ages but with the same duration of insulin use.

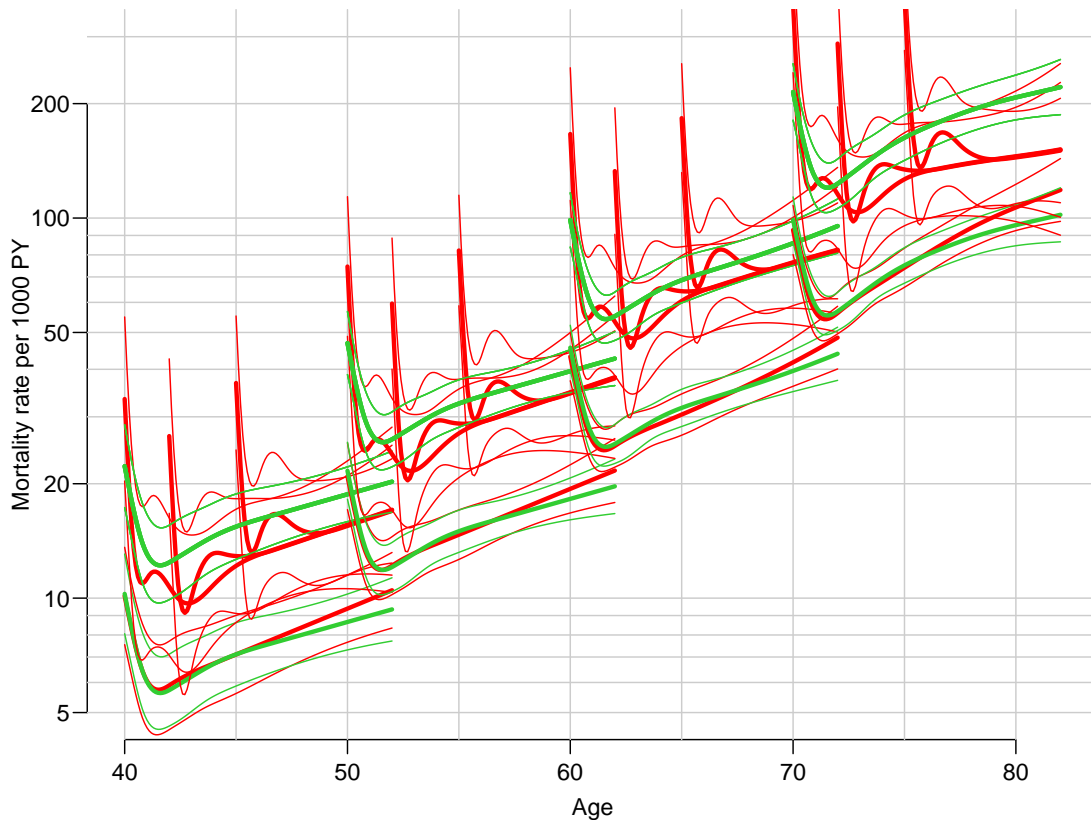


Figure 1.2: *Estimated mortality rates for male diabetes patients with no insulin (lower sets of curves) and insulin (upper curves), with DM onset in age 40, 50, 60 and 70. The red curves are from the models with separate age effects for persons with and without insulin, and a separate effect of insulin duration. The green curves are from the model with common age-effects and only a time-dependent effect of insulin, assuming no effect of insulin duration (the classical time-dependent variable approach). Hence the upper green curve is common for any time of insulin inception.*

1.6 Input to the *simLexis* function

In order to simulate from the multistate model with the estimated transition rates, and get the follow-up of a hypothetical cohort, we must supply *both* the transition rates and the structure of the model *as well as* the initial cohort status to *simLexis*.

1.6.1 The transition object

We first put the models into an object representing the transitions; note this is a list of lists, the latter having *glm* objects as elements:

```
> Tr <- list( "DM" = list( "Ins"      = DM.Ins,
+                          "Dead"    = DM.Dead ),
+             "Ins" = list( "Dead(Ins)" = Ins.Dead ) )
```

Now we have the description of the rates and of the structure of the model. The *Tr* object defines the states and models for all transitions between them; the object *Tr* $\$$ *A* $\$$ *B* is the model for the transition intensity from state *A* to state *B*.

1.6.2 The initial cohort

We now define an initial *Lexis* object of persons with all relevant covariates defined. Note that we use `subset` to get a *Lexis* object, this conserves the `time.scale` and `time.since` attributes which is needed for the simulation (the usual “[” operator does not preserve these attributes when you select columns):

```
> str( Si[NULL,1:9] )
Classes 'Lexis' and 'data.frame':      0 obs. of  9 variables:
 $ lex.id : int
 $ Per    : num
 $ Age    : num
 $ DMdur  : num
 $ t.Ins  : num
 $ lex.dur: num
 $ lex.Cst: Factor w/ 4 levels "DM","Ins","Dead",...
 $ lex.Xst: Factor w/ 4 levels "DM","Ins","Dead",...
 $ sex    : Factor w/ 2 levels "M","F":
 - attr(*, "time.scales")= chr  "Per" "Age" "DMdur" "t.Ins"
 - attr(*, "time.since")= chr  "" "" "" "Ins"
 - attr(*, "breaks")=List of 4
 ..$ Per : NULL
 ..$ Age : NULL
 ..$ DMdur: num  0 0.5 1 1.5 2 2.5 3 3.5 4 4.5 ...
 ..$ t.Ins: NULL

> ini <- subset(Si,FALSE,select=1:9)
> str( ini )
Classes 'Lexis' and 'data.frame':      0 obs. of  9 variables:
 $ lex.id : int
 $ Per    : num
 $ Age    : num
 $ DMdur  : num
 $ t.Ins  : num
 $ lex.dur: num
 $ lex.Cst: Factor w/ 4 levels "DM","Ins","Dead",...
 $ lex.Xst: Factor w/ 4 levels "DM","Ins","Dead",...
 $ sex    : Factor w/ 2 levels "M","F":
 - attr(*, "time.scales")= chr  "Per" "Age" "DMdur" "t.Ins"
 - attr(*, "time.since")= chr  "" "" "" "Ins"
 - attr(*, "breaks")=List of 4
 ..$ Per : NULL
 ..$ Age : NULL
 ..$ DMdur: num  0 0.5 1 1.5 2 2.5 3 3.5 4 4.5 ...
 ..$ t.Ins: NULL

> ini <- subset(Si,select=1:9)[NULL,]
> str( ini )
Classes 'Lexis' and 'data.frame':      0 obs. of  9 variables:
 $ lex.id : int
 $ Per    : num
 $ Age    : num
 $ DMdur  : num
 $ t.Ins  : num
 $ lex.dur: num
 $ lex.Cst: Factor w/ 4 levels "DM","Ins","Dead",...
 $ lex.Xst: Factor w/ 4 levels "DM","Ins","Dead",...
 $ sex    : Factor w/ 2 levels "M","F":
 - attr(*, "time.scales")= chr  "Per" "Age" "DMdur" "t.Ins"
 - attr(*, "time.since")= chr  "" "" "" "Ins"
 - attr(*, "breaks")=List of 4
 ..$ Per : NULL
 ..$ Age : NULL
 ..$ DMdur: num  0 0.5 1 1.5 2 2.5 3 3.5 4 4.5 ...
 ..$ t.Ins: NULL
```

We now have an empty *Lexis* object with attributes reflecting the timescales in multistate model we want to simulate, so we must now enter some data to represent the persons whose follow-up we want to simulate through the model; we set up an initial dataset with one man and one woman:

```
> ini[1:2,"lex.id"] <- 1:2
> ini[1:2,"lex.Cst"] <- "DM"
> ini[1:2,"Per"] <- 1995
> ini[1:2,"Age"] <- 60
> ini[1:2,"DMdur"] <- 5
> ini[1:2,"sex"] <- c("M","F")
> ini
```

	lex.id	Per	Age	DMdur	t.Ins	lex.dur	lex.Cst	lex.Xst	sex
1	1	1995	60	5	NA	NA	DM	<NA>	M
2	2	1995	60	5	NA	NA	DM	<NA>	F

1.7 Simulation of the follow-up

Now we simulate 1000 of each of these persons using the estimated model. The `t.range` argument gives the times range where the integrated intensities (cumulative rates) are evaluated and where linear interpolation is used when simulating transition times. Note that this must be given in the same units as `lex.dur` in the *Lexis* object used for fitting the models for the transitions.

```
> set.seed( 52381764 )
> Nsim <- 1000
> system.time( simL <- simLexis( Tr,
+                               ini,
+                               t.range = 12,
+                               N = Nsim ) )
```

	user	system	elapsed
	3.374	0.060	3.434

The result is a *Lexis* object — a data frame representing the simulated follow-up of 2000 persons (1000 identical men and 1000 identical women) according to the rates we estimated from the original dataset.

```
> summary( simL, by="sex" )
```

\$M

Transitions:

	From	To	DM	Ins	Dead	Dead(Ins)	Records:	Events:	Risk time:	Persons:
	DM	DM	291	400	309	0	1000	709	7414.21	1000
	Ins	Ins	0	269	0	131	400	131	2161.43	400
	Sum		291	669	309	131	1400	840	9575.64	1000

\$F

Transitions:

	From	To	DM	Ins	Dead	Dead(Ins)	Records:	Events:	Risk time:	Persons:
	DM	DM	416	358	226	0	1000	584	8507.18	1000
	Ins	Ins	0	285	0	73	358	73	1807.59	358
	Sum		416	643	226	73	1358	657	10314.77	1000

1.7.1 Using other models for simulation

1.7.1.1 Proportional hazards Poisson model

We fitted a proportional mortality model `All.Dead` (which fitted worse than the other two), this is a model for *both* the transition from “DM” to “Death” *and* from “Ins” to “Dead(Ins)”, assuming that they are proportional. But it can easily be used in the simulation set-up, because the state is embedded in the model via the term `lex.Cst`, which is updated during the simulation.

Simulation using this instead just requires that we supply a different transition object:

```
> Tr.p <- list( "DM" = list( "Ins"      = DM.Ins,
+                           "Dead"     = All.Dead ),
+              "Ins" = list( "Dead(Ins)" = All.Dead ) )
> system.time( simP <- simLexis( Tr.p,
+                               ini,
+                               t.range = 12,
+                               N = Nsim ) )
   user  system elapsed 
3.485    0.020    3.506 
> summary( simP, by="sex" )
$M
Transitions:
  To
From  DM Ins Dead Dead(Ins) Records: Events: Risk time: Persons:
DM    307 425 268         0    1000     693   7491.30    1000
Ins    0 235  0        190     425     190   2002.44     425
Sum   307 660 268        190   1425     883   9493.73    1000

$F
Transitions:
  To
From  DM Ins Dead Dead(Ins) Records: Events: Risk time: Persons:
DM    419 376 205         0    1000     581   8480.93    1000
Ins    0 259  0        117     376     117   1897.21     376
Sum   419 635 205        117   1376     698  10378.14    1000
```

1.7.1.2 Proportional hazards Cox model

A third possibility would be to replace the two-time scale proportional mortality model by a one-time-scale Cox-model, using diabetes duration as time scale, and age at diagnosis of DM as (fixed) covariate:

```
> library( survival )
> Cox.Dead <- coxph( Surv( DMdur, DMdur+lex.dur,
+                         lex.Xst %in% c("Dead(Ins)", "Dead")) ~
+                         Ns( Age-DMdur, knots=ad.kn ) +
+                         I(lex.Cst=="Ins") +
+                         I(Per-2000) + sex,
+                         data = Si )
> round( ci.exp( Cox.Dead ), 3 )
               exp(Est.)   2.5%  97.5%
Ns(Age - DMdur, knots = ad.kn)1   4.172  3.535  4.924
Ns(Age - DMdur, knots = ad.kn)2   4.503  3.825  5.301
Ns(Age - DMdur, knots = ad.kn)3  16.077 14.087 18.348
Ns(Age - DMdur, knots = ad.kn)4   7.479  6.500  8.605
I(lex.Cst == "Ins")TRUE           2.171  1.949  2.419
I(Per - 2000)                     0.965  0.954  0.977
sexF                             0.667  0.616  0.723
```



```
> round( ci.exp( All.Dead ), 3 )
              exp(Est.)   2.5%  97.5%
(Intercept)      0.049  0.043  0.056
Ns(Age, knots = ad.kn)1    4.120  3.479  4.879
Ns(Age, knots = ad.kn)2    4.652  4.054  5.338
Ns(Age, knots = ad.kn)3   15.460 13.575 17.608
Ns(Age, knots = ad.kn)4    7.529  6.711  8.447
Ns(DMdur, knots = dd.kn)1   0.520  0.429  0.629
Ns(DMdur, knots = dd.kn)2   0.707  0.622  0.803
Ns(DMdur, knots = dd.kn)3   0.319  0.238  0.428
Ns(DMdur, knots = dd.kn)4   0.829  0.742  0.926
lex.CstIns        2.168  1.946  2.414
I(Per - 2000)      0.965  0.954  0.977
sexF              0.665  0.614  0.720
```

Note that in order for this model to be usable for simulation, it is necessary that we use the components of the `Lexis` object to specify the survival. Each record in the data frame `Si` represents follow up from `DMdur` to `DMdur+lex.dur`, so the model is a Cox model with diabetes duration as underlying timescale and age at diagnosis, `Age-DMdur`, as covariate.

Also note that we used `I(lex.Cst=="Ins")` instead of just `lex.Cst`, because `coxph` assigns design matrix columns to all levels of `lex.Cst`, also those not present in data, which would give NAs among the parameter estimates and NAs as mortality outcomes.

We see that the effect of insulin and the other covariates are pretty much the same as in the two-time-scale model. We can simulate from this model too; there is no restrictions on what type of model can be used for different transitions

```
> Tr.c <- list( "DM" = list( "Ins"      = Tr$DM$Ins,
+                           "Dead"     = Cox.Dead ),
+              "Ins" = list( "Dead(Ins)" = Cox.Dead ) )
> system.time( simC <- simLexis( Tr.c,
+                               ini,
+                               t.range = 12,
+                               N = Nsim ) )
   user  system elapsed 
4.329   0.000   4.328 

> summary( simC, by="sex" )
$M

Transitions:
  To
From  DM  Ins  Dead  Dead(Ins)  Records:  Events: Risk time:  Persons:
DM   334 378  288         0      1000      666   7471.19      1000
Ins    0 260   0        118       378      118   1851.35       378
Sum  334 638  288        118      1378      784   9322.54      1000

$F

Transitions:
  To
From  DM  Ins  Dead  Dead(Ins)  Records:  Events: Risk time:  Persons:
DM   468 356  176         0      1000      532   8570.58      1000
Ins    0 277   0         79       356       79   1816.50       356
Sum  468 633  176         79      1356      611  10387.08      1000
```

1.8 Reporting the simulation results

We can now tabulate the number of persons in each state at a predefined set of times on a given time scale. Note that in order for this to be sensible, the `from` argument would normally be equal to the starting time for the simulated individuals.


```
> system.time(
+ nSt <- nState( subset(simL,sex=="M"),
+               at=seq(0,11,0.2), from=1995, time.scale="Per" ) )
      user system elapsed
      0.143   0.000   0.143

> nSt[1:10,]
      State
when      DM  Ins Dead Dead(Ins)
1995      1000    0    0         0
1995.2     991    8    1         0
1995.4     972   18   10         0
1995.6     948   33   19         0
1995.8     936   40   24         0
1996     917   47   35         1
1996.2     899   56   43         2
1996.4     884   66   48         2
1996.6     872   75   51         2
1996.8     859   82   57         2
```

We see that as time goes by, the 5000 men slowly move away from the starting state (DM).

Based on this table (*nSt* is a table) we can now compute the fractions in each state, or, rather more relevant, the cumulative fraction across the states in some specified order, so that a plot of the stacked probabilities can be made, using either the default rather colorful layout, or a more minimalistic version (both in figure 1.3):

```
> pM <- pState( nSt, perm=c(1,2,4,3) )
> head( pM )
      State
when      DM  Ins Dead(Ins) Dead
1995      1.000 1.000      1.000  1
1995.2  0.991 0.999      0.999  1
1995.4  0.972 0.990      0.990  1
1995.6  0.948 0.981      0.981  1
1995.8  0.936 0.976      0.976  1
1996    0.917 0.964      0.965  1

> par( mfrow=c(1,2), mar=c(3,3,1,1), mgp=c(3,1,0)/1.6 )
> plot( pM )
> plot( pM, border="black", col="transparent", lwd=3 )
> text( rep(as.numeric(rownames(pM)[nrow(pM)-1])),ncol(pM)),
+       pM[nrow(pM),]-diff(c(0,pM[nrow(pM),]))/5,
+       colnames( pM ), adj=1 )
> box( col="white", lwd=3 )
> box()
```

A more useful set-up of the graph would include a more through annotation and sensible choice of colors, as seen in figure 1.4:

```
> clr <- c("limegreen","orange")
> # expand with a lighter version of the two chosen colors
> clx <- c( clr, rgb( t( col2rgb( clr[2:1] ) *2 + rep(255,3) ) / 3, max=255 ) )
> par( mfrow=c(1,2), las=1, mar=c(3,3,4,2), mgp=c(3,1,0)/1.6 )
> # Men
> plot( pM, col=clx )
> lines( as.numeric(rownames(pM)), pM[,2], lwd=3 )
> mtext( "60 year old male, diagnosed 1990, aged 55", side=3, line=2.5, adj=0, col=gray(0.6) )
> mtext( "Survival curve", side=3, line=1.5, adj=0 )
> mtext( "DM, no insulin  DM, Insulin", side=3, line=0.5, adj=0, col=clr[1] )
> mtext( "DM, no insulin", side=3, line=0.5, adj=0, col=clr[2] )
> axis( side=4 )
> axis( side=4, at=1:19/20, labels=FALSE )
> axis( side=4, at=1:99/100, labels=FALSE, tcl=-0.3 )
```

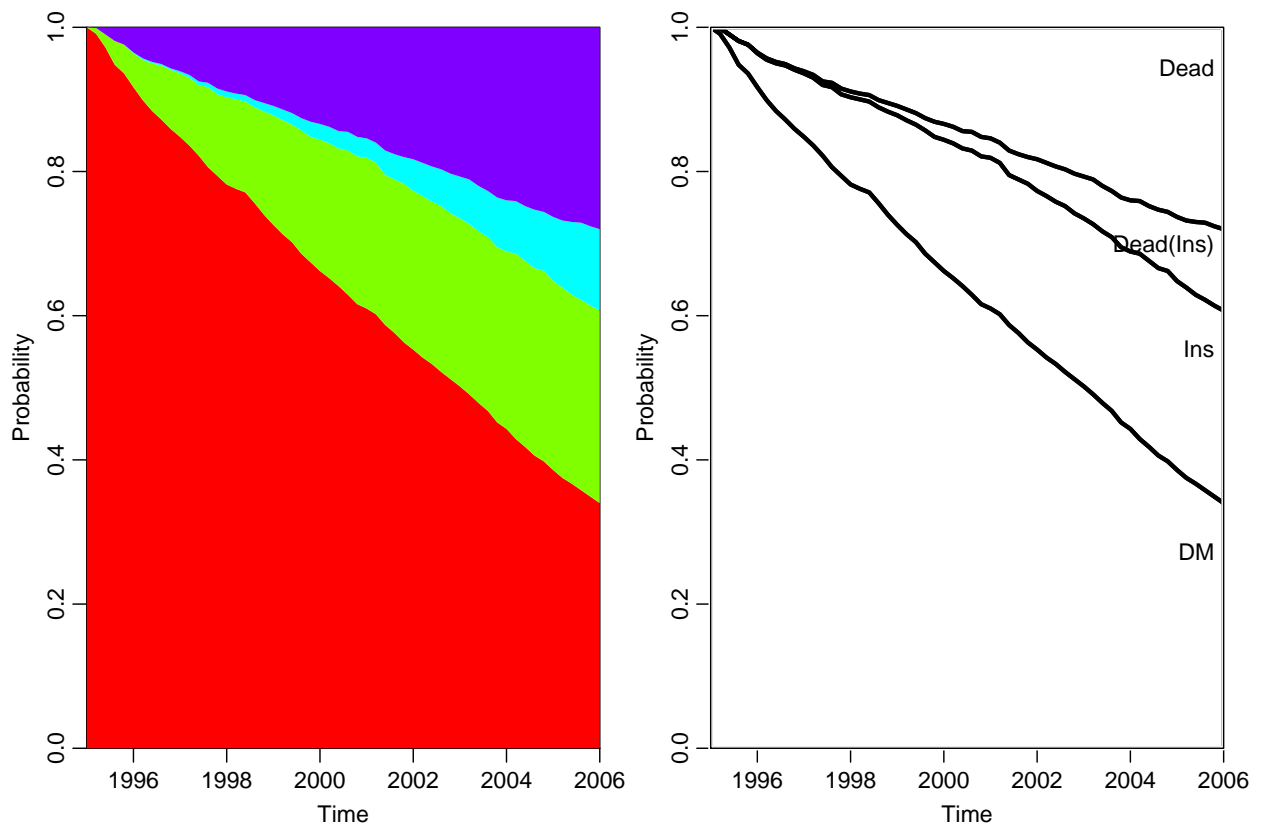


Figure 1.3: Default layout of the `plot.pState` graph (left), and a version with the state probabilities as lines and annotation of states.

```
> # Women
> pF <- pState( nState( subset(simL,sex=="F"),
+                         at=seq(0,11,0.2),
+                         from=1995,
+                         time.scale="Per" ),
+               perm=c(1,2,4,3) )
> plot( pF, col=clx )
> lines( as.numeric(rownames(pF)), pF[,2], lwd=3 )
> mtext( "60 year old female, diagnosed 1990, aged 55", side=3, line=2.5, adj=0, col=gray(0.6) )
> mtext( "Survival curve", side=3, line=1.5, adj=0 )
> mtext( "DM, no insulin", "DM, Insulin", side=3, line=0.5, adj=0, col=clr[1] )
> mtext( "DM, no insulin", side=3, line=0.5, adj=0, col=clr[2] )
> axis( side=4 )
> axis( side=4, at=1:19/20, labels=FALSE )
> axis( side=4, at=1:99/100, labels=FALSE, tcl=-0.3 )
```

If we instead wanted to show the results on the age-scale, we would use age as timescale when constructing the probabilities; otherwise the code is pretty much the same as before (Figure 1.5):

```
> par( mfrow=c(1,2), las=1, mar=c(3,3,4,2), mgp=c(3,1,0)/1.6 )
> # Men
> pM <- pState( nState( subset(simL,sex=="M"),
+                         at=seq(0,11,0.2),
+                         from=60,
+                         time.scale="Age" ),
+               perm=c(1,2,4,3) )
> plot( pM, col=clx, xlab="Age" )
> lines( as.numeric(rownames(pM)), pM[,2], lwd=3 )
```

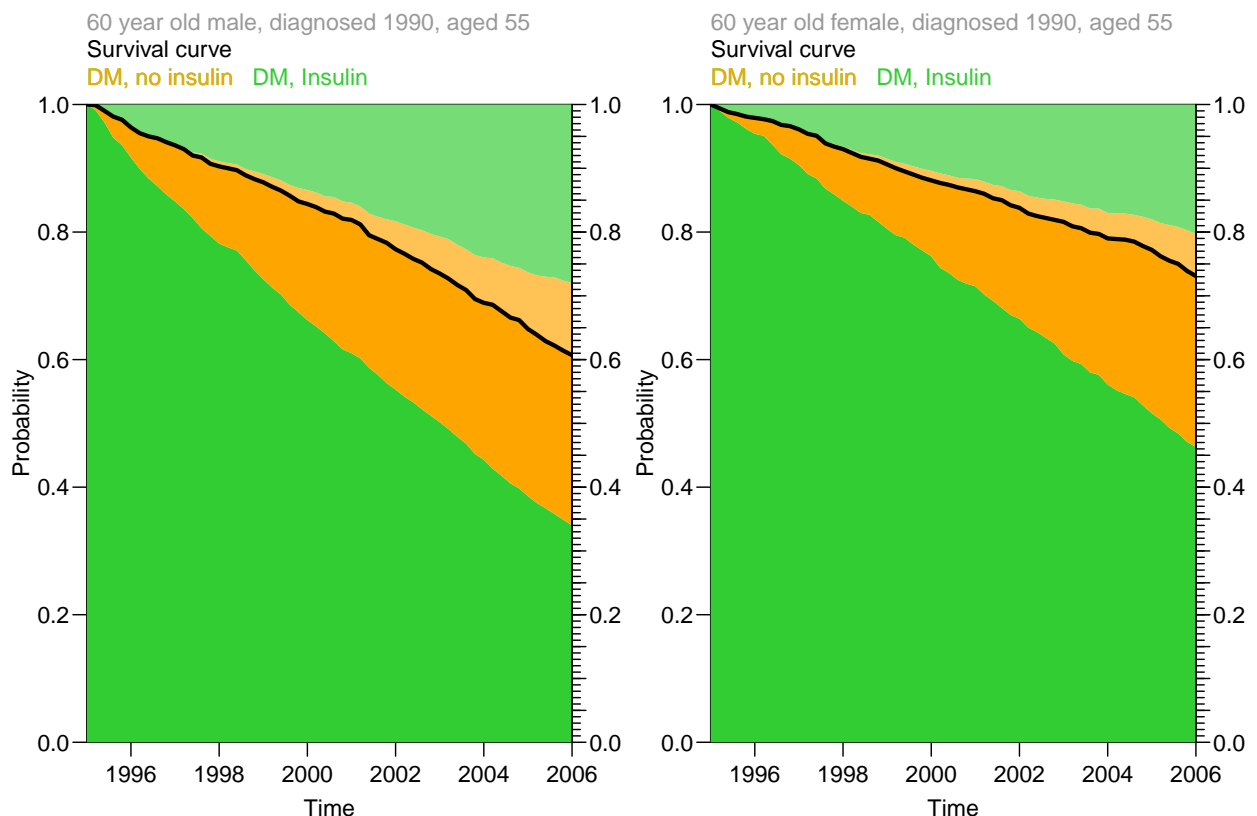


Figure 1.4: `plot.pState` graphs where persons ever on insulin are given in orange and persons never on insulin in green, and the overall survival (dead over the line) as a black line.

```
> mtext( "60 year old male, diagnosed 1990, aged 55", side=3, line=2.5, adj=0, col=gray(0.6) )
> mtext( "Survival curve", side=3, line=1.5, adj=0 )
> mtext( "DM, no insulin  DM, Insulin", side=3, line=0.5, adj=0, col=clr[1] )
> mtext( "DM, no insulin", side=3, line=0.5, adj=0, col=clr[2] )
> axis( side=4 )
> axis( side=4, at=1:19/20, labels=FALSE )
> axis( side=4, at=1:19/20, labels=FALSE, tcl=-0.4 )
> axis( side=4, at=1:99/100, labels=FALSE, tcl=-0.3 )
> # Women
> pF <- pState( nState( subset(simL,sex=="F"),
+                         at=seq(0,11,0.2),
+                         from=60,
+                         time.scale="Age" ),
+               perm=c(1,2,4,3) )
> plot( pF, col=clx, xlab="Age" )
> lines( as.numeric(rownames(pF)), pF[,2], lwd=3 )
> mtext( "60 year old female, diagnosed 1990, aged 55", side=3, line=2.5, adj=0, col=gray(0.6) )
> mtext( "Survival curve", side=3, line=1.5, adj=0 )
> mtext( "DM, no insulin  DM, Insulin", side=3, line=0.5, adj=0, col=clr[1] )
> mtext( "DM, no insulin", side=3, line=0.5, adj=0, col=clr[2] )
> axis( side=4 )
> axis( side=4, at=1:9/10, labels=FALSE )
> axis( side=4, at=1:19/20, labels=FALSE, tcl=-0.4 )
> axis( side=4, at=1:99/100, labels=FALSE, tcl=-0.3 )
```

Note the several statements with `axis(side=4,...)`; they are necessary to get the fine tick-marks in the right hand side of the plots that you will need in order to read off the probabilities at 2006 (or 71 years).

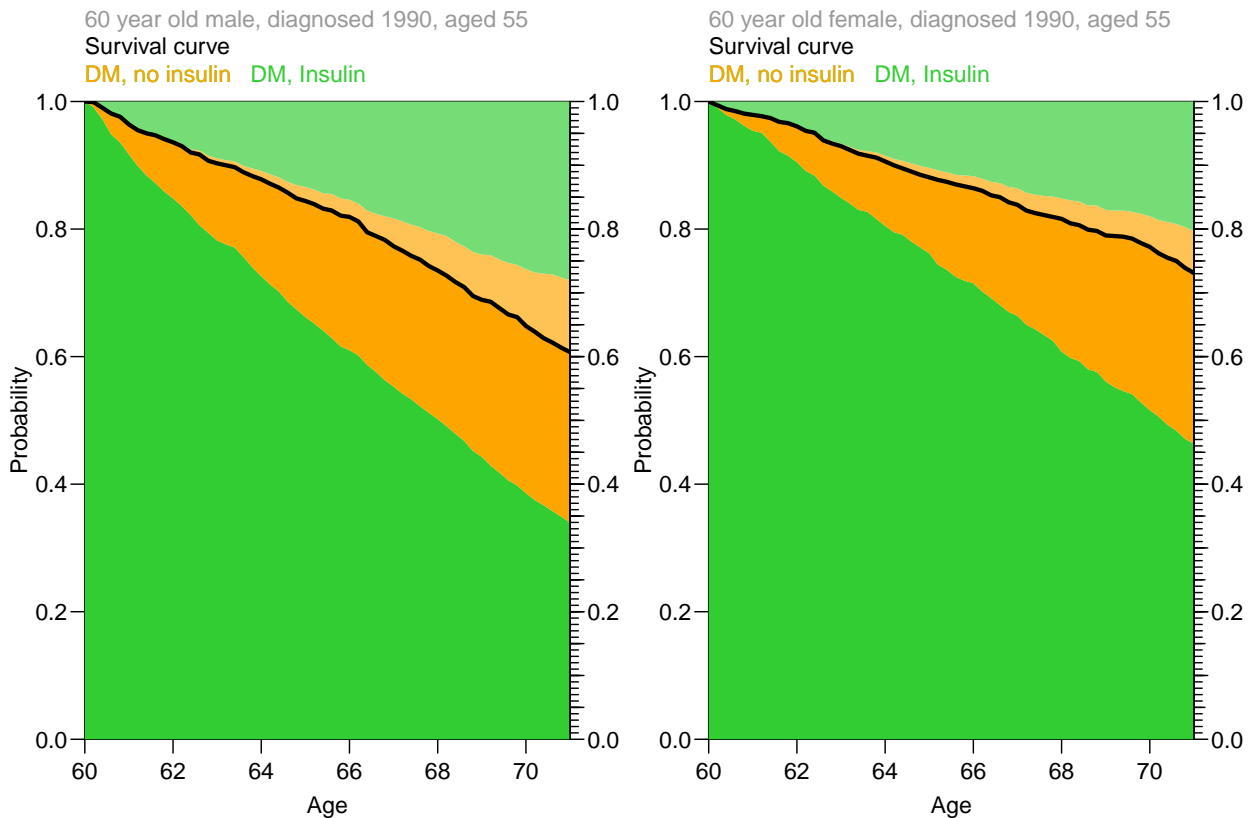


Figure 1.5: `plot.pState` graphs where persons ever on insulin are given in orange and persons never on insulin in green, and the overall survival (dead over the line) as a black line.

1.8.1 Comparing predictions from different models

We have actually fitted different models for the transitions, and we have simulated Lexis objects from all three approaches, so we can plot these predictions on top of each other:

```
> PrM <- pState( nState( subset(simP,sex=="M"),
+                         at=seq(0,11,0.2),
+                         from=60,
+                         time.scale="Age" ),
+               perm=c(1,2,4,3) )
> PrF <- pState( nState( subset(simP,sex=="F"),
+                         at=seq(0,11,0.2),
+                         from=60,
+                         time.scale="Age" ),
+               perm=c(1,2,4,3) )
> CoxM <- pState( nState( subset(simC,sex=="M"),
+                         at=seq(0,11,0.2),
+                         from=60,
+                         time.scale="Age" ),
+               perm=c(1,2,4,3) )
> CoxF <- pState( nState( subset(simC,sex=="F"),
+                         at=seq(0,11,0.2),
+                         from=60,
+                         time.scale="Age" ),
+               perm=c(1,2,4,3) )
> par( mfrow=c(1,2), mar=c(3,3,1,1), mgp=c(3,1,0)/1.6 )
> plot( PrM, border="black", col="transparent", lwd=3 )
> lines( PrM, border="blue", col="transparent", lwd=3 )
```

```

> lines( CoxM, border="red" , col="transparent", lwd=3 )
> text( 60.5, 0.05, "M" )
> box( lwd=3 )
> plot( pF, border="black", col="transparent", lwd=3 )
> lines( PrF, border="blue" , col="transparent", lwd=3 )
> lines( CoxF, border="red" , col="transparent", lwd=3 )
> text( 60.5, 0.05, "F" )
> box( lwd=3 )

```

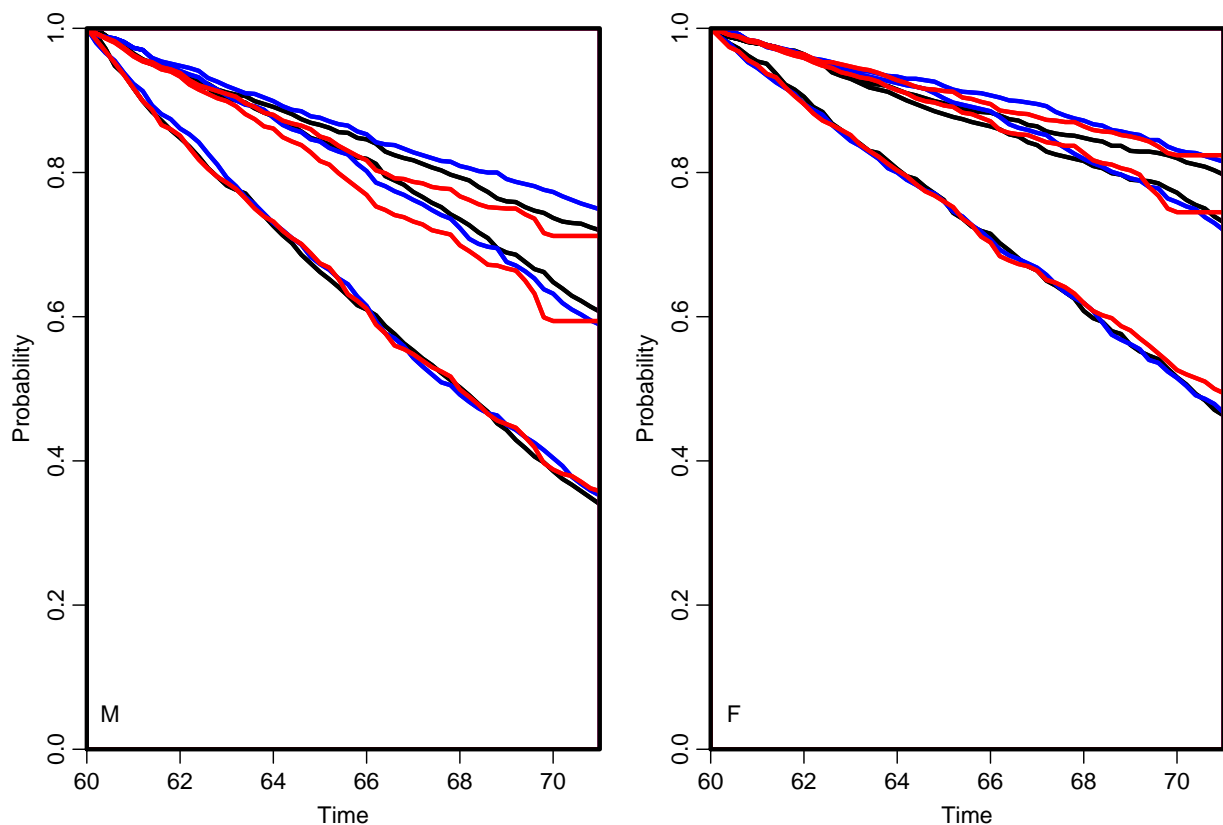


Figure 1.6: *Comparison of the simulated state occupancy probabilities using separate Poisson models for the mortality rates with and without insulin (black) and using proportional hazards Poisson models (blue) and Cox-models with diabetes duration as timescale and age at diabetes diagnosis as covariate (red).*

From figure 1.6 it is clear that the two proportional hazards models (blue and red curves) produce pretty much the same estimates of the state occupancy probabilities over time, but also that they relative to the model with separately estimated transition intensities overestimates the probability of being alive without insulin and underestimates the probabilities of being dead without insulin. However both the overall survival, and the fraction of persons on insulin are quite well in agreement with the more elaborate model. Thus the proportional hazards models overestimate the relative mortality of the insulin treated diabetes patients relative to the non-insulin treated.

Interestingly, we also see a bump in the estimated probabilities from the Cox-model based model, but this is entirely an artifact that comes from the estimation method for the baseline hazard of the Cox-model that lets the (cumulative) hazard have large jumps at event times where the risk set is small. So also here it shows up that an assumption of continuous underlying hazards leads to more credible estimates.

Chapter 2

Simulation of transitions in multistate models

2.1 Theory

Suppose that the rate functions for the transitions out of the current state to, say, 3 different states are λ_1 , λ_2 and λ_3 , and the corresponding cumulative rates are Λ_1 , Λ_2 and Λ_3 , and we want to simulate an exit time and an exit state (that is either 1, 2 or 3). This can be done in two slightly different ways:

1. First time, then state:

- (a) Compute the survival function, $S(t) = \exp(-\Lambda_1(t) - \Lambda_2(t) - \Lambda_3(t))$
- (b) Simulate a random $U(0,1)$ variate, u , say.
- (c) The simulated exit time is then the solution t_u to the equation $S(t_u) = u \Leftrightarrow \sum_j \Lambda_j(t_u) = -\log(u)$.
- (d) A simulated transition at t_u is then found by simulating a random draw from the multinomial distribution with probabilities $p_i = \lambda_i(t_u) / \sum_j \lambda_j(t_u)$.

2. Separate cumulative incidences:

- (a) Simulate 3 independent $U(0,1)$ random variates u_1 , u_2 and u_3 .
- (b) Solve the equations $\Lambda_i(t_i) = -\log(u_i)$, $i = 1, 2, 3$ and get (t_1, t_2, t_3) .
- (c) The simulated survival time is then $\min(t_1, t_2, t_3)$, and the simulated transition is to the state corresponding to this, that is $k \in \{1, 2, 3\}$, where $t_k = \min(t_1, t_2, t_3)$

The intuitive argument is that with three possible transition there are 3 independent processes running, but only the first transition is observed. The latter approach is used in the implementation in `simLexis`.

The formal argument for the equality of the two approaches goes as follows:

1. Equality of the transition times:

- (a) In the first approach we simulate from a distribution with cumulative rate $\Lambda_1(t) + \Lambda_2(t) + \Lambda_3(t)$, hence from a distribution with survival function:

$$\begin{aligned} S(t) &= \exp(-(\Lambda_1(t) + \Lambda_2(t) + \Lambda_3(t))) \\ &= \exp(-\Lambda_1(t)) \times \exp(-\Lambda_2(t)) \times \exp(-\Lambda_3(t)) \end{aligned}$$

- (b) In the second approach we choose the smallest of three independent survival times, with survival functions $\exp(-\Lambda_i)$, $i = 1, 2, 3$. Now, the survival function for the minimum of three independent survival times is:

$$\begin{aligned} S_{\min}(t) &= P\{\min(t_1, t_2, t_3) > t\} \\ &= P\{t_1 > t\} \times P\{t_2 > t\} \times P\{t_3 > t\} \\ &= \exp(-\Lambda_1(t)) \times \exp(-\Lambda_2(t)) \times \exp(-\Lambda_3(t)) \end{aligned}$$

which is the same survival function as derived above.

2. Type of transition:

- (a) In the first instance the probability of a transition to state i , conditional on the transition time being t , is as known from standard probability theory:
 $\lambda_i(t) / (\lambda_1(t) + \lambda_2(t) + \lambda_3(t))$.
- (b) In the second approach we choose the transition corresponding to the the smallest of the transition times. So when we condition on the event that a transition takes place at time t , we have to show that the conditional probability that the smallest of the three simulated transition times was actually the i th, is as above.

But conditional on *survival* till t , the probabilities that events of type 1, 2, 3 takes place in the interval $(t, t + dt)$ are $\lambda_1(t) dt$, $\lambda_2(t) dt$ and $\lambda_3(t) dt$, respectively (assuming that the probability of more than one event in the interval of length dt is 0). Hence the conditional probabilities *given a transition time* in $(t, t + dt)$ is:

$$\frac{\lambda_i(t) dt}{\lambda_1(t) dt + \lambda_2(t) dt + \lambda_3(t) dt} = \frac{\lambda_i(t)}{\lambda_1(t) + \lambda_2(t) + \lambda_3(t)}$$

— exactly as above.

2.2 Components of *simLexis*

This section explains the actually existing code for *simLexis*, as it is in the current version of *Epi*. The function *simLexis* takes a *Lexis* object as input. This defines the initial state(s) and times of the start for a number of persons. Since the purpose is to simulate a history through the estimated multistate model, the input values of the outcome variables *lex.Xst* and *lex.dur* are ignored — the aim is to simulate values for them.

Note however that the attribute *time.since* must be present in the object. This is used for initializing timescales defined as time since entry into a particular state, it is a character vector of the same length as the *time.scales* attribute, with value equal to a state name if the corresponding time scale is defined as time since entry into that state. In this example the 4th timescale is time since entry into the “Ins” state, and hence:

```

> cbind(
+ attr( ini, "time.scale" ),
+ attr( ini, "time.since" ) )
      [,1] [,2]
[1,] "Per"  ""
[2,] "Age"  ""
[3,] "DMdur" ""
[4,] "t.Ins" "Ins"

```

`Lexis` objects will have this attribute set for time scales created using `cutLexis`.

The other necessary argument is a transition object `Tr`, which is a list of lists. The elements of the lists should be `glm` objects derived by fitting Poisson models to a `Lexis` object representing follow-up data in a multistate model. It is assumed (but not checked) that timescales enter in the model via the timescales of the `Lexis` object. Formally, there are no assumptions about how `lex.dur` enters in the model.

Optional arguments are `t.range`, `n.int` or `time.pts`, specifying the times after entry at which the cumulative rates will be computed (the maximum of which will be taken as the censoring time), and `N` a scalar or numerical vector of the number of persons with a given initial state each record of the `init` object should represent.

The central part of the functions uses a `do.call / lapply / split` construction to do simulations for different initial states. This is the construction in the middle that calls `simX`. `simLexis` also calls `get.next` which is further detailed below.

```

> simLexis
function( Tr, # List of lists of transition objects
          init, # Lexis object of persons to simulate.
          N = 1, # No. persons simulated per line in init
          lex.id,
          t.range = 20, # Range for rate computation in the simulation
          n.int = 101, # length of time intervals
          time.pts = seq(0,t.range,length.out=n.int)
        )
{
# Expand the input data frame using N and put in lex.id
if( time.pts[1] !=0 )
  stop( "First time point must be 0, time.pts[1:3]= ",
        time.pts[1:3] )

# Expand init
if( !missing(N) )
{
  if( length(N) == 1 )
    init <- init[rep(1:nrow(init),each=N),]
  else init <- init[rep(1:nrow(init),      N),]
}

# and update lex.id if necessary
if( !missing(lex.id) )
{
  if( length(lex.id)==nrow(init) )
    init$lex.id <- lex.id
  else init$lex.id <- 1:nrow(init)
}
else  init$lex.id <- 1:nrow(init)

# Check/fix attributes
if( is.null( tS <- attr(init,"time.scales") ) )
  stop( "No time.scales attribute for init" )
if( is.null( tF <- attr(init,"time.since") ) )
{
  attr(init,"time.since") <- tF <- rep( "", tS )
  warning( "'time.since' attribute set to blanks" )
}

```



```

}

# Convenience constants
np <- length( time.pts )
tr.st <- names( Tr )

# Set up a NULL object to hold the follow-up records
sf <- NULL

# Take as initiators only those who start in a transient state
nxt <- init[init$lex.Cst %in% tr.st,]

# If some are not in a transient state then say so
if( nrow(nxt) < nrow(init) )
{
  tt <- table(init$lex.Cst)
  tt <- tt[tt>0]
  nt <- length(tt)
  warning("\nSome initiators start in a absorbing state\n",
    "Initiator states represented are: ",
    paste( rbind( names(tt), rep(":",nt),
      paste(tt, rep(" ",nt) ), collapse="" ), "\n",
    "Transient states are: ", paste( names( Tr ), coll=" " ) )
  if( nrow(nxt)==0 ) stop( "\nNo initiators in transient states!" )
}

# Then we update those who are in a transient states and keep on doing
# that till all are in absorbing states or censored
while( nrow(nxt) > 0 )
{
  nx <- do.call( rbind.data.frame,
    lapply( split( nxt,
      nxt$lex.Cst ),
      simX,
      Tr, time.pts, tS ) )
  sf <- rbind.data.frame( sf, nx )
  nxt <- get.next( nx, tr.st, tS, tF )
}

# Doctor lex.Xst levels, fix values for the censored
sf$lex.Xst <- factor( sf$lex.Xst, levels=levels(sf$lex.Cst) )
sf$lex.Xst[is.na(sf$lex.Xst)] <- sf$lex.Cst[is.na(sf$lex.Xst)]

# Nicely order the output by persons, then times and states
nord <- match( c( "lex.id", tS,
  "lex.dur",
  "lex.Cst",
  "lex.Xst" ), names(sf) )
noth <- setdiff( 1:ncol(sf), nord )
sf <- sf[order(sf$lex.id,sf[,tS[1]]),c(nord,noth)]
rownames(sf) <- NULL
# Finally, supply attributes - note we do not supply the "breaks"
# attribute as this is irrelevant for simulated objects
attr( sf, "time.scales" ) <- tS
attr( sf, "time.since" ) <- tF
chop.lex( sf, tS, max(time.pts) )
}

```

2.2.1 *simX*

simX is called by *simLexis* and simulates transition-times and -types for a set of patients assumed to be in the same state. It is called from *simLexis* with a data frame as argument, uses the state in *lex.Cst* to select the relevant component of *Tr* and compute

predicted cumulative intensities for all states reachable from this state.

Note that it is here the switch between `glm`, `coxph` and objects of class `function` is made.

The dataset on which this prediction is done has `length(time.pts)` rows per person.

```
> simX
function( nd, Tr, time.pts, tS )
{
  # Simulation is done from the data frame nd, in chunks of starting
  # state, lex.Cst. This is necessary because different states have
  # different (sets of) exit rates. Therefore, this function simulates
  # for a set of persons from the same starting state.
  np <- length( time.pts )
  nr <- nrow( nd )
  if( nr==0 ) return( NULL )

  # The 'as.character' below is necessary because indexing by a factor
  # by default is by the number of the level, and we are not indexing by
  # this, but by components of Tr which just happens to have names that
  # are a subset of the levels of lex.Cst.
  cst <- as.character( unique(nd$lex.Cst) )
  if( length(cst)>1 ) stop( "More than one lex.Cst present:\n", cst, "\n" )

  # Expand each person by the time points
  prfrm <- nd[rep(1:nr,each=np),]
  prfrm[,tS] <- prfrm[,tS] + rep(time.pts,nr)
  prfrm$lex.dur <- il <- min( diff(time.pts) )
  # Poisson-models should use the estimated rate at the midpoint of the
  # intervals:
  prfrp <- prfrm
  prfrp[,tS] <- prfrp[,tS]+il/2

  # Make a data frame with predicted rates for each of the transitions
  # out of this state for these times
  rt <- data.frame( lex.id = prfrm$lex.id )
  for( i in 1:length(Tr[[cst]]) )
  {
    if( inherits( Tr[[cst]][[i]], "glm" ) )
      rt <- cbind( rt, predict( Tr[[cst]][[i]],
                              type="response",
                              newdata=prfrp ) )
    else
      if( inherits( Tr[[cst]][[i]], "coxph" ) )
        rt <- cbind( rt, predict( Tr[[cst]][[i]],
                                  type="expected",
                                  newdata=prfrm ) )
      else
        if( is.function( Tr[[cst]][[i]] ) )
          rt <- cbind( rt, Tr[[cst]][[i]](prfrm) )
        else
          stop( "Invalid object supplied as transition, elements of the list must be either:\n",
                "- a glm(poisson) object fitted to a Lexis object\n",
                "- a coxph object fitted to a Lexis object\n",
                "- a function that takes a Lexis object as argument and returns\n",
                "  average rates for each record in the same units as lex.dur.")
  }
  names( rt )[-1] <- names( Tr[[cst]] )

  # Then find the transition time and exit state for each person:
  xx <- match( c("lex.dur","lex.Xst"), names(nd) )
  if( any(!is.na(xx)) ) nd <- nd[,-xx[!is.na(xx)]]
  merge( nd,
         do.call( rbind,
                   lapply( split( rt,
                                 rt$lex.id ),
                           sim1,
                           time.pts ) ),
```

```
      by="lex.id" )
}
```

As we see, `simX` calls `sim1` which simulates the transition for one person.

2.2.2 `sim1`

The predicted cumulative intensities are fed, person by person, to `sim1` — again via a `do.call / lapply / split` construction — and the resulting time and state is appended to the `nd` data frame. This way we have simulated *one* transition (time and state) for each person:

```
> sim1
function( rt, time.pts )
{
  # Simulates a single transition time and state based on the data frame
  # rt with columns lex.id and timescales. It is assumed that the coumns
  # in in rt are the id, followed by the set of estimated transition
  # rates to the different states reachable from the current one.
  ci <- apply( rbind(0,rt[,-1,drop=FALSE]), 2, cumsum )[1:nrow(rt),,drop=FALSE]
  tt <- uu <- -log( runif(ncol(ci)) )
  for( i in 1:ncol(ci) ) tt[i] <- lint( ci[,i], time.pts, uu[i] )
  # Note this resulting data frame has 1 row and is NOT a Lexis object
  data.frame( lex.id = rt[1,1],
              lex.dur = min(tt,na.rm=TRUE),
              lex.Xst = factor( if( min(tt) < max(time.pts) )
                               colnames(ci)[tt==min(tt)]
                               else NA ) )
}
```

The `sim1` function uses `lint` to do linear interpolation.

2.2.3 `lint`

We do not use `approx` to do the linear interpolation, because this function does not do the right thing if the cumulative incidences (`ci`) are constant across a number of times.

Therefore we have a custom made linear interpolator that does the interpolation exploiting the fact the the `ci` is min-decreasing and `tt` is strictly monotonously increasing:

```
> lint
function( ci, tt, u )
{
  # Makes a linear interpolation, but does not crash if all ci values are
  # identical, but requires that both ci and tt are non-decreasing.
  # ci plays the role of cumulative intensity, tt of time
  if( any( diff(ci)<0 ) | any( diff(tt)<0 ) ) stop("Non-increasing arguments")
  c.u <- min( c( ci[ci>u], max(ci) ) )
  c.l <- max( c( ci[ci<u], min(ci) ) )
  t.u <- min( c( tt[ci>u], max(tt) ) )
  t.l <- max( c( tt[ci<u], min(tt) ) )
  # c.u==c.l if u is outside the range of ci
  ifelse( c.u==c.l, t.l, t.l + (u-c.l)/(c.u-c.l)*(t.u-t.l) )
}
```

2.2.4 `get.next`

We must repeat the simulation operation on those that have a simulated entry to a transient state, and also make sure that any time scales defined as time since entry to one of these states be initialized to 0 before a call to `simX` is made for these persons. This accomplished by the function `get.next`:

```
> get.next
function( sf, tr.st, tS, tF )
{
  # Produces an initial Lexis object for the next simulation for those
  # who have ended up in a transient state.
  # Note that this exploits the existence of the "time.since" attribute
  # for Lexis objects and assumes that a character vector naming the
  # transient states is supplied as argument.
  if( nrow(sf)==0 ) return( sf )
  nxt <- sf[sf$lex.Xst %in% tr.st,]
  if( nrow(nxt) == 0 ) return( nxt )
  nxt[,tS] <- nxt[,tS] + nxt$lex.dur
  wh <- tF
  for( i in 1:length(wh) )
    if( wh[i] != "" ) nxt[nxt$lex.Xst==wh[i],tS[i]] <- 0
  nxt$lex.Cst <- nxt$lex.Xst
  return( nxt )
}
```

2.2.5 `chop.lex`

The operation so far has censored individuals `max(time.pts)` after *each* new entry to a transient state. In order to groom the output data we use `chop.lex` to censor all persons at the same designated time after *initial* entry.

```
> chop.lex
function( obj, tS, cens )
{
  # A function that chops off all follow-up beyond cens since entry for
  # each individual
  # Entry times on 1st timescale
  zz <- entry( obj, 1, by.id=TRUE )
  # Merge with the revised exit times on this timescale
  ww <- merge( obj, data.frame( lex.id = as.numeric(names(zz)),
                                cens = zz+cens ) )
  # Only retain records with an entry time prior to the revised exit time
  ww <- ww[ww[,tS[1]] < ww$cens,]
  # Revise the duration according the the revised exit time
  x.dur <- pmin( ww$lex.dur, ww[, "cens"]-ww[,tS[1]] )
  # Change lex.Xst to lex.Cst for those with shortened follow-up
  ww$lex.Xst[x.dur<ww$lex.dur] <- ww$lex.Cst[x.dur<ww$lex.dur]
  # Insert the updated follow-yp time
  ww$lex.dur <- pmin( x.dur, ww$lex.dur )
  ww
}
```

2.3 Probabilities from simulated Lexis objects

Once we have simulated a Lexis object we will of course want to use it for estimating probabilities, so basically we will want to enumerate the number of persons in each state at a pre-specified set of time points.

2.3.1 nState

Since we are dealing with multistate model with potentially multiple time scales, it is necessary to define the timescale (`time.scale`), the starting point on this timescale (`from`) and the points after this where we compute the number of occupants in each state, (`at`).

```
> nState
function ( obj,
            at,
            from,
            time.scale = 1 )
{
  # Counts the number of persons in each state of the Lexis object 'obj'
  # at the times 'at' from the time 'from' in the time scale
  # 'time.scale'

  # Determine timescales and absorbing and transient states
  tS <- check.time.scale(obj,time.scale)
  TT <- tmat(obj)
  absorb <- rownames(TT)[apply(!is.na(TT),1,sum)==0]
  transient <- setdiff( rownames(TT), absorb )

  # Expand each record length(at) times
  tab.frm <- obj[rep(1:nrow(obj),each=length(at)),
                 c(tS,"lex.dur","lex.Cst","lex.Xst")]

  # Stick in the corresponding times on the chosen time scale
  tab.frm$when <- rep( at, nrow(obj) ) + from

  # For transient states keep records that includes these points in time
  tab.tr <- tab.frm[tab.frm[,tS]
                    <= tab.frm$when &
                    tab.frm[,tS]+tab.frm$lex.dur > tab.frm$when,]
  tab.tr$State <- tab.tr$lex.Cst

  # For absorbing states keep records where follow-up ended before
  tab.ab <- tab.frm[tab.frm[,tS]+tab.frm$lex.dur <= tab.frm$when &
                    tab.frm$lex.Xst %in% absorb,]
  tab.ab$State <- tab.ab$lex.Xst

  # Make a table using the combination of those in transient and
  # absorbing states.
  with( rbind( tab.ab, tab.tr ), table( when, State ) )
}
```

2.3.2 pState, plot.pState and lines.pState

In order to plot probabilities of state-occupancy it is useful to compute cumulative probabilities across states in any given order; this is done by the function `pState`, which returns a matrix of class `pState`:

```
> pState
function( nSt, perm=1:ncol(nSt) )
{
  # Compute cumulative proportions of persons across states in order
  # designate by 'perm'
  tt <- t( apply( nSt[,perm], 1, cumsum ) )
  tt <- sweep( tt, 1, tt[,ncol(tt)], "/" )
  class( tt ) <- c("pState","matrix")
  tt
}
```

There is also a `plot` and `lines` method for the resulting `pState` objects:

```
> plot.pState
function( x,
          col = rainbow(ncol(x)),
          border = "transparent",
          xlab = "Time",
          ylim = 0:1,
          ylab = "Probability", ... )
{
  # Function to plot cumulative probabilities along the time scale.
  matplot( as.numeric(rownames(x)), x, type="n",
           ylim=ylim, yaxs="i", xaxs="i",
           xlab=xlab, ylab=ylab, ... )
  lines.pState( x,
                col = col,
                border = border, ... )
}

> lines.pState
function( x,
          col = rainbow(ncol(x)),
          border = "transparent", ... )
{
  # Function to plot cumulative probabilities along the time scale.

  # Fixing the colors:
  nc <- ncol(x)
  col <- rep( col , nc )[1:nc]
  border <- rep( border, nc )[1:nc]

  # Just for coding convenience when plotting polygons
  pSt <- cbind( 0, x )
  for( i in 2:ncol(pSt) )
  {
    polygon( c( as.numeric(rownames(pSt)) ,
                 rev(as.numeric(rownames(pSt))) ),
             c( pSt[,i] ,
                 rev(pSt[,i-1]) ),
             col=col[i-1], border=border[i-1], ... )
  }
}
```

Bibliography

- [1] B. Carstensen and M. Plummer. Using Lexis objects for multi-state models in R. *Journal of Statistical Software*, 38(6):1–18, 1 2011.
- [2] S. Iacobelli and B. Carstensen. Multiple time scales in multi-state models. *Stat Med*, 32(30):5315–5327, Dec 2013.
- [3] M. Plummer and B. Carstensen. Lexis: An R class for epidemiological studies with long-term follow-up. *Journal of Statistical Software*, 38(5):1–12, 1 2011.